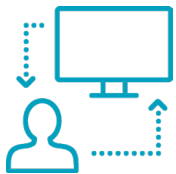


# Empowering secure remote desktop access and support

The #1 solution for remote connectivity.



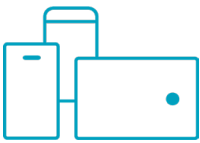
## Remote support

IT pros choose TeamViewer™ to provide instant remote support for their clients anywhere, at anytime. Quickly and securely.



## Remote Access

Supported by a blazing-fast global network, TeamViewer™ free remote access software tools enable you connect to your devices for maintenance, monitoring and more, from anywhere, anytime.



## Support for mobile devices

Connect to a mobile device in seconds to provide support or share files. TeamViewer is the only remote support software on the market that is compatible with both iOS and Windows phones, as well as more than 60 Android manufacturers.



## Home Office

Work from home securely and efficiently by connecting to a remote office computer to access files, networks, applications, and more. Even print from the remote computer to your local printer.

## Benefits

### Maximum compatibility

Flexible PC to PC, mobile to PC, PC to mobile and even mobile to mobile connections that support Windows, Mac OS, Linux, Chrome OS, iOS, Android, Windows 10 Mobile, and BlackBerry.

### Smooth connectivity

Start and use TeamViewer instantly. TeamViewer works behind firewalls and automatically detects any proxy configuration.

### Productivity-boosting

Support, assist, interact, and collaborate with people. Exchange information. Access and use technology. Work like you're in the same room without the travel and expense.

### Maximum security

Ensure the security of data, devices, and networks with end-to-end encryption and additional security features.

A **subscription plan** is available for TeamViewer based on your business needs.

For more information visit [www.teamviewer.com](http://www.teamviewer.com)

## BUSINESS

Use the license on up to **three different devices**.

With **one channel**, you can connect to an unlimited number of devices (and up to 200 managed devices).

## PREMIUM

Up to **50 licensed users** can use **one channel** to connect from anywhere to an unlimited number of devices (and up to 400 managed devices).

## CORPORATE

Up to **200 licensed users** can use three channels to simultaneously connect from anywhere to an unlimited number of devices (and up to 1,000 managed devices).

## TENSOR

Enterprise Grade Features Available to Deploy Instantly with TeamViewer Tensor™

- Single Sign-On
- Device-agnostic connectivity
- Comprehensive logging
- Silent rollout

and much more.



## Security

TeamViewer protects data and devices with RSA 2048 public/private key exchange, AES (256 bit) session encryption end-to-end, which is based on the same standards as https/SSL and considered very secure.



## ISO/IEC 27001 Quality Certification

All of the data centers that TeamViewer uses have achieved ISO/IEC 27001 certification, which is the international standard for information security management systems and security controls.

### Additional security features



Random passwords for one-time access



Two-factor authentication



Access protection via trusted devices and black- and white-lists



GDPR compliant